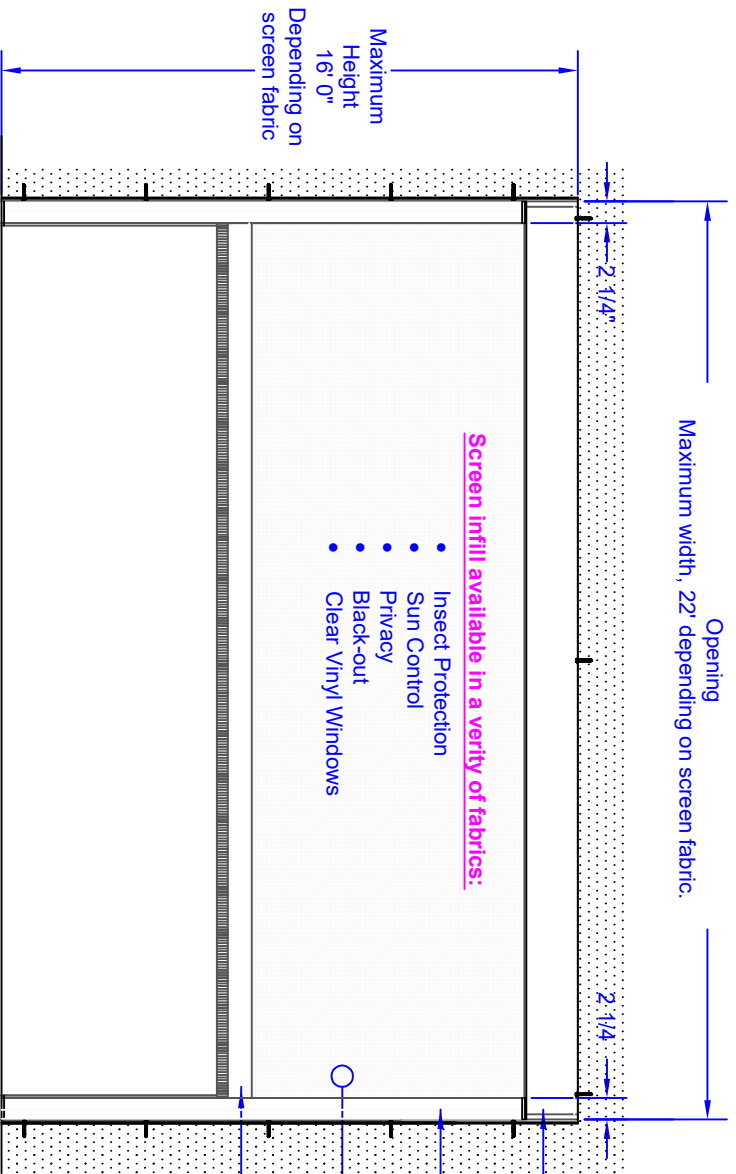


Installation Specification

Inside Mount, Under Header

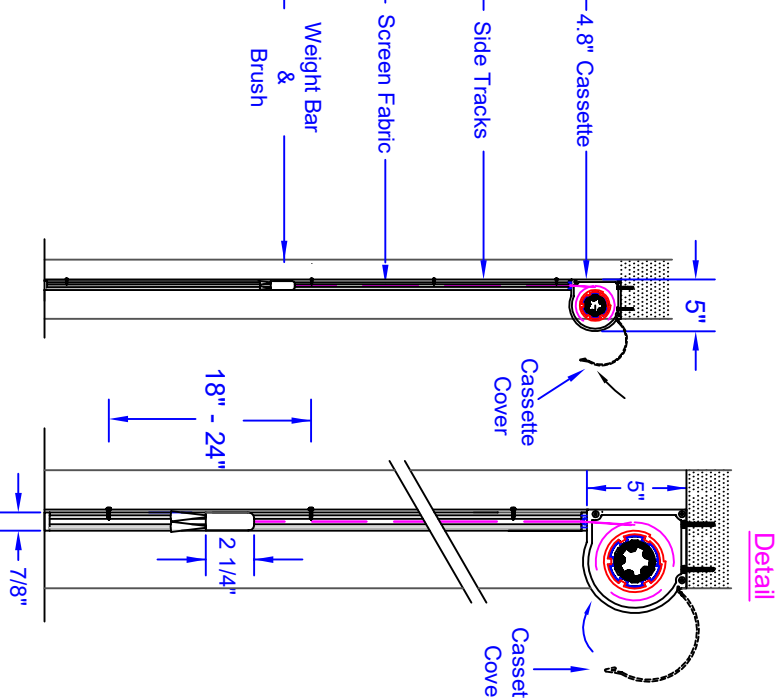
Front View



Screen Infill available in a variety of fabrics:

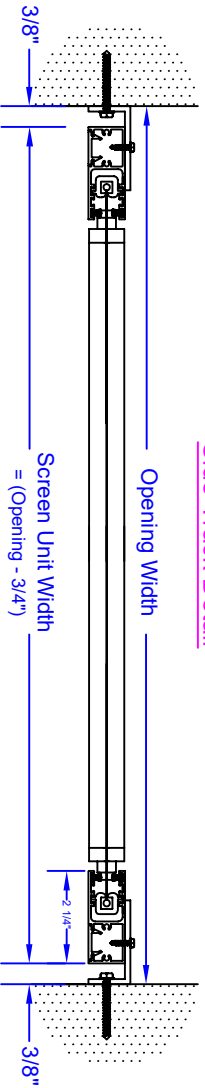
- Insect Protection
- Sun Control
- Privacy
- Black-out
- Clear Vinyl Windows

Side View



Cassette & Weight Bar Detail

Side Track Detail



Motor

- * 120V AC 60Hz "Somfy" Motor
- * Index Protection Rating: IP 44
- * Rated Current 1.3A to 2.1A
- * c/w Object detection or clutch
- Operators**
- * Single channel hand-held remote control.
- * Multi-channel hand-held remote control.
- * Somfy "mylink" app for smart-phone.
- * Compatible for home automation systems



Designed by	Checked by	Approved by	Drawn by	Date
Universal Screens	Universal Screens	Universal Screens	Universal Screens	1/1
Universal Screens	Universal Screens	Universal Screens	Universal Screens	1/1
Universal Screens	Universal Screens	Universal Screens	Universal Screens	1/1