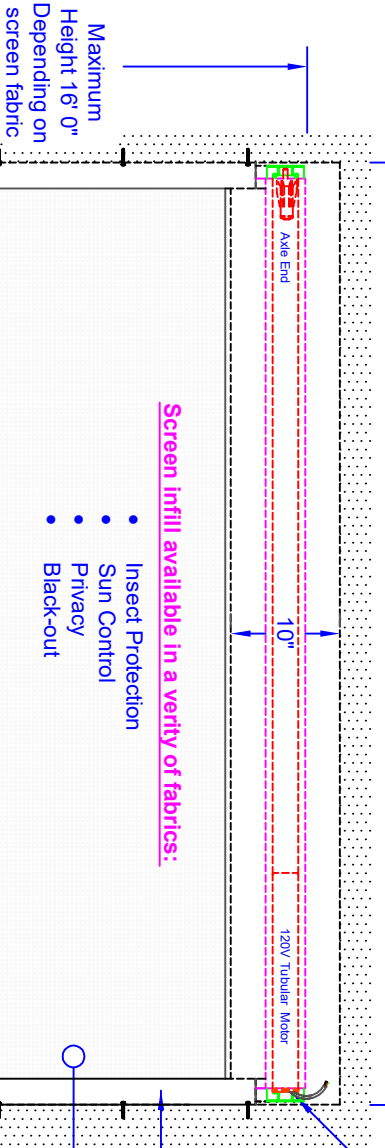


Installation Specification

Recessed Mount Using Mounting Brackets

Front View

Opening width plus "Side Track" clearances, Minimum 2 1/4" per "Side Track".
Maximum total width, 25" depending on screen fabric.

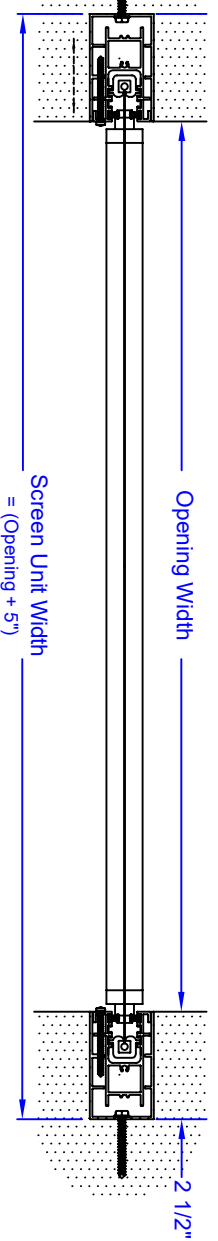


Screen Infill available in a variety of fabrics:

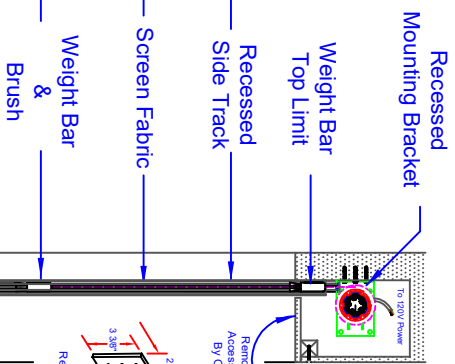
- Insect Protection
- Sun Control
- Privacy
- Black-out

Opening Width

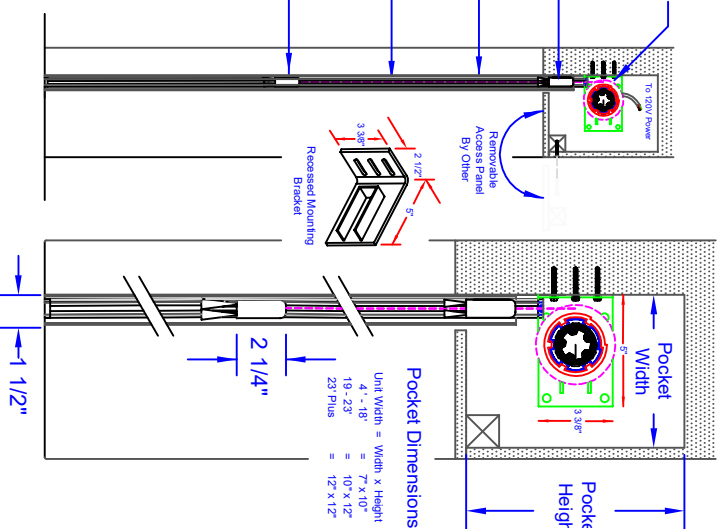
Side Track Detail



Side View



Pocket & Weight Bar Detail



Motor

- * 120V AC 60Hz "Somfy" Motor
- * Index Protection Rating: IP 44
- * Rated Current 1.3A to 2.1A
- * c/w Object detection or clutch
- * Operators
- * Single channel hand-held remote control.
- * Multi-channel hand-held remote control.
- * Somfy "myLink" app for smart-phone.
- * Compatible for home automation systems



Model / Quantity	Tube/Frame, designation, material, dimensions etc.	Article No./Reference
Designed by	Checked by	Date of issue
Approved by - date	Approved by - date	Scale
Drawn	Drawn	1:1
Checked	Checked	
Universal Screens	Universal Recessed	
N/A	Edison	Sheet
		1/1

